

View Point

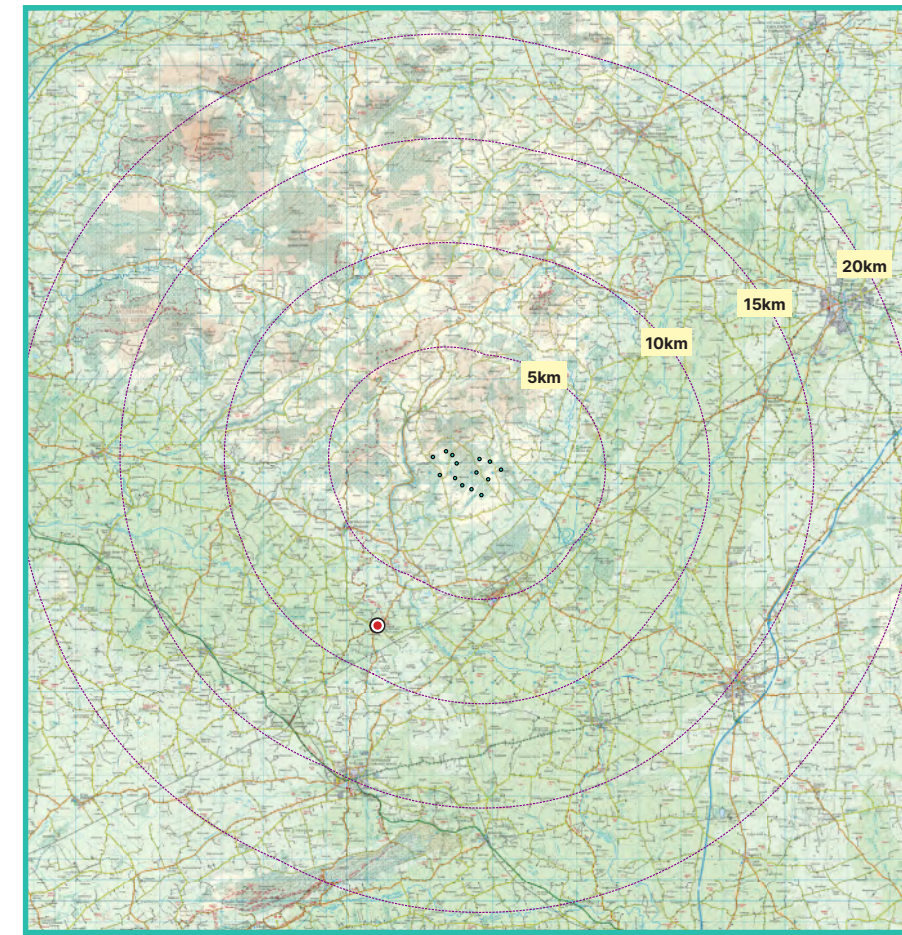
15

Multeen Way at Donohill

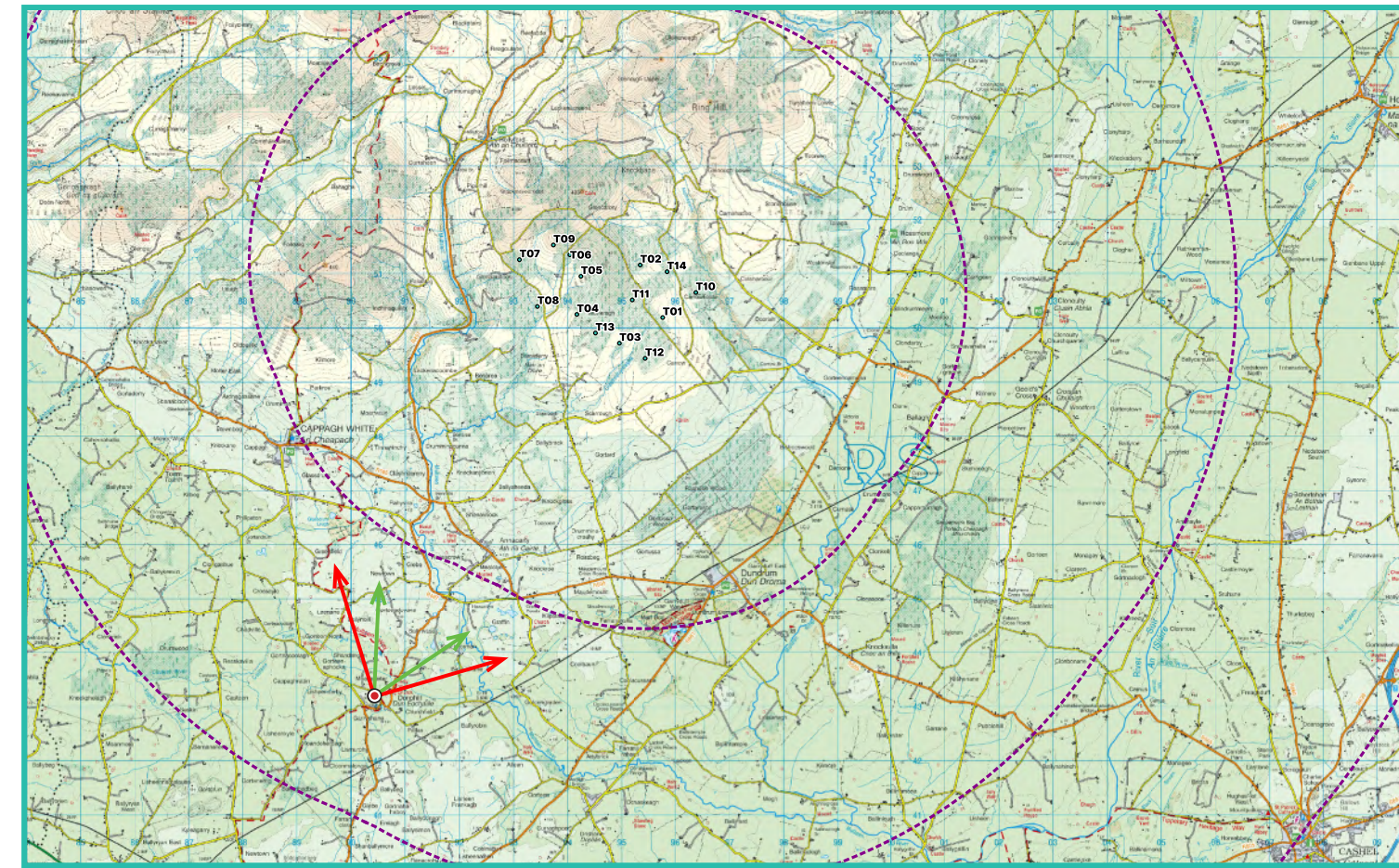
Photomontage 15

View from the Multeen Way in the River Suir valley at Donohill village, way-marked walking trail on L4206 Local Road in the townland of Donohill Lands. Located approximately 7.8km south-west of the nearest turbine (T13).

View point grid reference	E 590415 N 643233
Date of image taken	2024-09-11
Time of image taken	14:53
View point elevation	93m
Angle of Views	90° / 53.5°
View Direction (Image Centre)	28°
Number of proposed turbines visible in Photomontage	11/14
Turbine Hub Height	103.5m
Turbine Rotor Diameter	163m
Turbine Tip Height	185m
Montage Type	Type 4 Photomontage / Survey / Scale Verifiable
Camera & Lens	Canon 5D Mark III / Full Frame Sensor with a 50mm Lens
Tripod	Manfrotto 190X extended to approx 1.5m.
Map Licence	© Ordnance Survey Ireland. All rights reserved. Licence number CYAL50267517

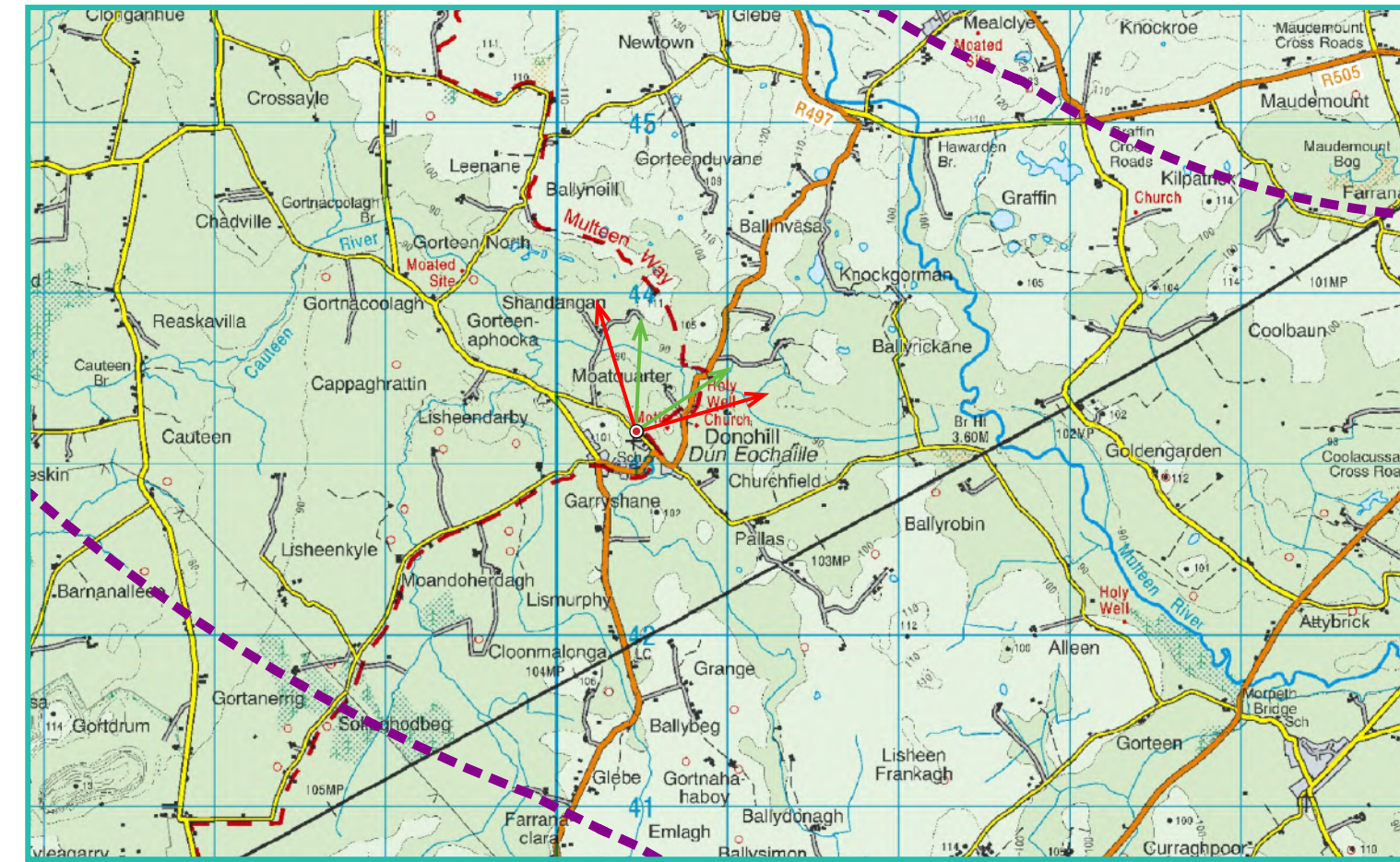


View point relative to 20km radius.



View point relative to proposed wind farm site.

90° View Extent



Detail of view point location.

Map Legend

- Area shown in 90° view
- Area shown in 53.5° view
- View Point
- Proposed Carrow Wind Farm

Wireline Legend

- Proposed Carrow Wind Farm
- Proposed Met Mast (103.5m)
- Existing Wind Farms
- Permitted Wind Farms
- Proposed Wind Farms

Prepared by
MKO
Planning & Environmental Consultants
Tuam Road, Galway.

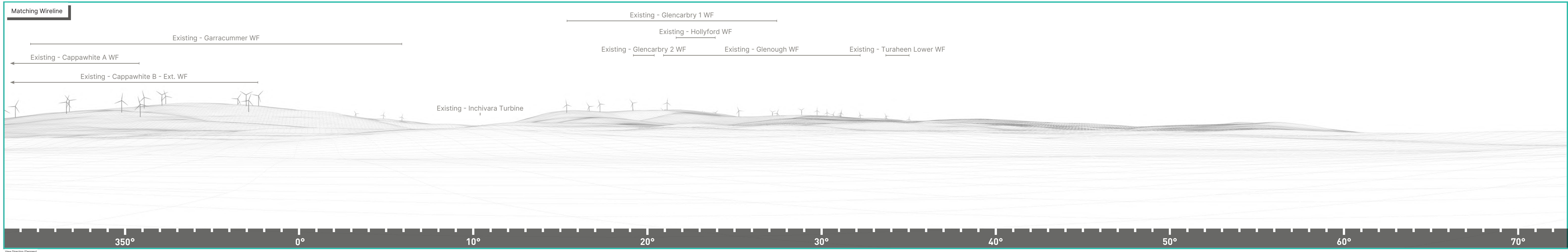
Tel: (091) 73 56 11
E-mail: info@mkofireland.ie
Website: www.mkofireland.ie



Key Image at 120°



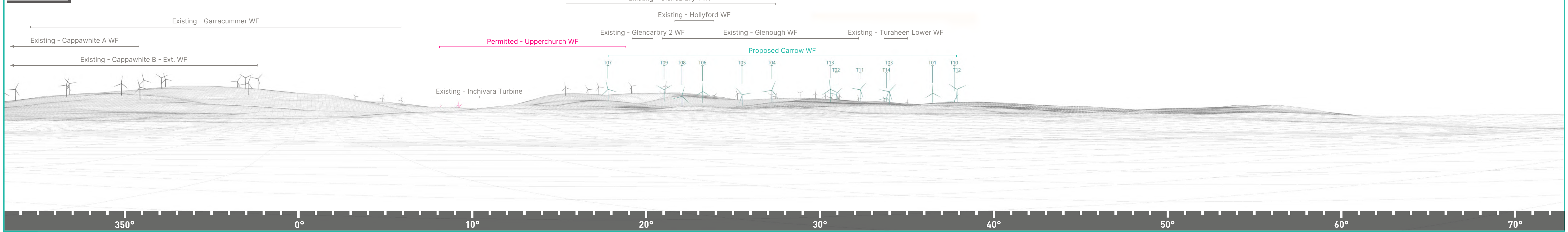
53.5° View Extent



Proposed Photomontage with Cumulative at 90°



Matching Wireline



Proposed Photomontage with Cumulative at 53.5°



10°

20°

30°

40°

50°

Matching Wireline

